

Timeless Tulips



Included Features

- Airport arrival/departure transfers if air purchased through us
- 1 Night first class hotel w/breakfast (Movenpick, Novotel, or similar)
- 7 nights aboard the **M/S Crucevita** in cabin categories of your choice.
- **21 Meals included:**
8 breakfasts, 6 lunches, 7 dinners with 2 glasses of wine/beer/soda/water/coffee/tea daily, with every dinner while on board the ship.
- Captain's Welcome cocktail and Farewell dinner
- All on board activities and services including, 24/7 free coffee stations, afternoon cake and snacks and live music each evening in the bar.
- English speaking Cruise Director and local guides throughout.

8 Tours Included

- Keukenhof Tulip Gardens
- Zaanse Schans Windmill Tour
- Amsterdam: Walking Tour
- Rotterdam: Walking Tour
- Ghent: Walking Tour
- Brussels: Bus/Walking Tour
- Antwerp: Bus/Walking Tour
- Dordrecht: City Tour



Whimsical Architecture, Rotterdam

9 days/8 nights: Dutch and Belgian Waterways including Keukenhof Gardens - M/S Crucevita

Day 0 Fly USA to the Netherlands

Day 1 Amsterdam, Holland (O)

Welcome to the Netherlands! On arrival, transfer to your first class hotel. The rest of the day is at leisure. Amsterdam offers plenty of opportunities to explore and dine on your own.

Day 2 Amsterdam - Embarkation (B, D)

After breakfast, check-out and depart on your half day tour of the magnificent Keukenhof Gardens, home to more than seven million tulips, daffodils and hyacinths spread out over 79 acres. After a break for lunch (on own) transfer back to the port to board your superior river cruise ship. Check in to your cabin and explore your floating hotel prior to an information briefing followed by dinner.

Day 3 Amsterdam (B, L, D)

After breakfast, depart on your included excursion to the village of Zaanse Schans, the famous open-air museum featuring 6 windmills and more than 30 houses built in 16-17th centuries, all of which invite you to discover the country-side life of Medieval Holland. The village has preserved old Dutch traditions of house building, clog making and old fashioned cheese production – which you will have a chance to see and sample as well. Return to your ship for lunch. In the afternoon, your walking tour of the city center will introduce you to all the major highlights including Dam Square, the Flower market and other major attractions! Tonight a welcome cocktail and crew introduction will precede dinner. Set sail PM.

Day 4 Rotterdam (B, L, D)

This morning explore one of the largest harbors and commercial ports in the world! Your walking tour will include the harbor front, the whimsical architecture including the hanging Cubic town houses and the steamship "Rotterdam" once the flagship of Holland America Line. The afternoon is free for optional pursuits including the optional tour to Delft and the Hague.

Day 5 Ghent, Belgium (B, L, D)

Today, delight in exploring Ghent, Belgium's hidden treasure! Exuding a unique mix of ancient cultures combined with a lively modern student scene, bustling shops and gastronomic restaurants Ghent will impress you with its winding canals,





the famous 3 tower row featuring the Belfry, St. Bravo's Cathedral and St Nicholas Church, its art and architecture! The balance of the day is free to explore on your own or take an optional excursion that may be offered by the ship (Bruges or similar).

Day 6 **Brussels** (B, L, D)

Your guided bus and walking tour of Belgium's capital will highlight all the major attractions including St. Michael's Cathedral, the Chinese Pavilion, Japanese Tower, King's Square, Royal Palace and of course, the imposing offices of the European Parliament building. You will end the tour with a walk through the beautiful Grote market. The balance of the day is free.

LAND START DATES & RATES

Cruise Rates per person/sharing a twin in Cat "C"

Start Date	End Date	Cruise Only
March 23	March 31	\$2,099
March 30	April 7	\$2,299
April 6	April 14	\$2,399
April 13	April 21	\$2,499
April 27	May 5	\$2,499

Port & Cruise fuel charges \$172

Single Occupancy (Category C/B): add 75%

Day 7 **Antwerp** (B, L, D)

This morning enjoy a tour of Belgium's second largest city, home to famous painter Pieter Paul Rubens. The tour will include the cities medieval heart with café filled cobblestone lanes, a riverside fortress and the impressive Cathedral of our Lady featuring original paintings of Antwerp's famous "son". The afternoon is free to explore on your own or take the optional chocolate tour featuring a visit to 3 chocolate making stores including tastings of the world renowned Belgian chocolates.

Day 8 **Dordrecht, Holland** (B, L, D)

Located on an island surrounded by wide rivers, Dordrecht was the county's earliest trading post. Your guided walking tour will include views of beautiful inner city harbors, quaint canals, wooden bridges and typical Dutch houses. Back on board enjoy a farewell cocktail followed by the Captain's Farwell dinner!

Day 9 **Amsterdam - Disembark** (B)

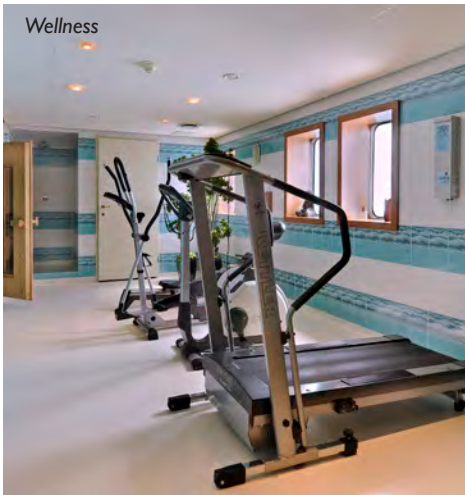
As all good things must come to an end, after breakfast, bid your crew goodbye and disembark with a suitcase full of memories!



M/S Crucevita



Wellness



Elegant, boutique cruise vessel with stylish decor, designed in an old world grand yacht style. Superb public areas, accented in oak and leather, include a panorama restaurant, cozy bar and lounge, lobby fire-place, gym, sauna, library, and sun deck! Main Deck cabins are spacious 14 sq m (150 sq ft) and fitted with beds that are stowed away during the day to create extra space. Upper Promenade deck cabins have new French balconies. All cabins include air-conditioning/heating that can be regulated individually, a multi-channel satellite TV, mini safe, telephone and hair dryer. The luxury bathrooms contain an enclosed shower and stylish wash basins. The decks are interconnected by a regular elevator suitable to carry up to 4 persons. The Sun Deck is accessible from the Promenade Deck by an outside chair lift. Maximum capacity 110 passengers serviced by a young and vivacious crew of 36. Non-smoking interior. On board currency: Euro.

Elegant Lobby



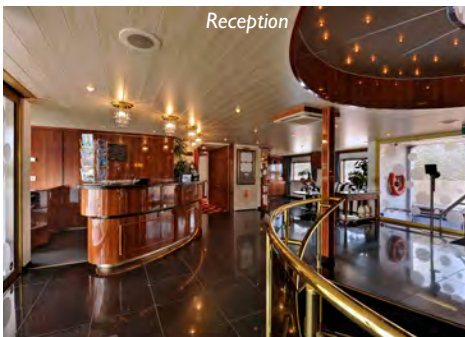
Elegant Bar



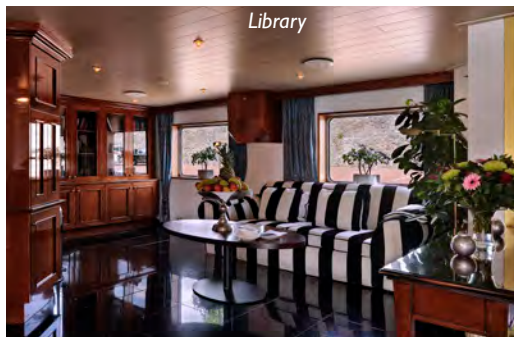
Sundeck



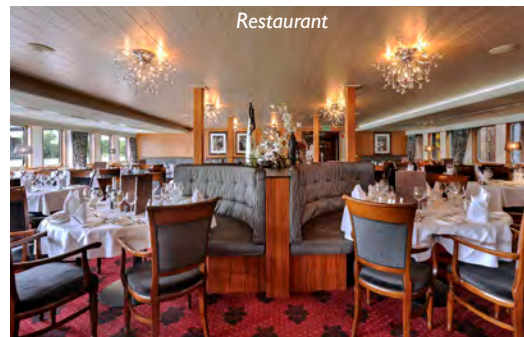
Reception

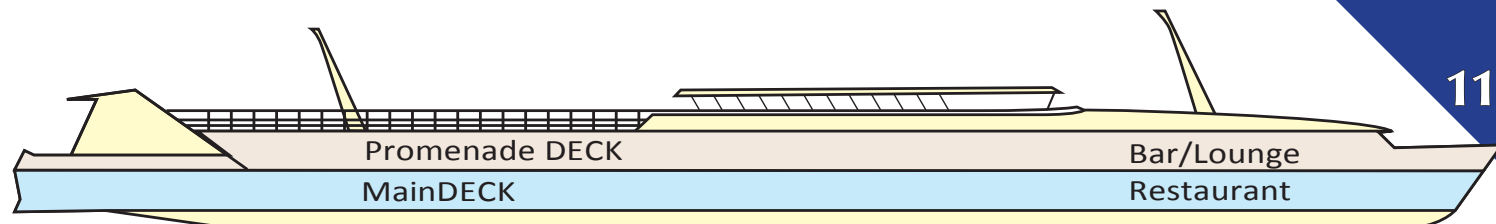


Library

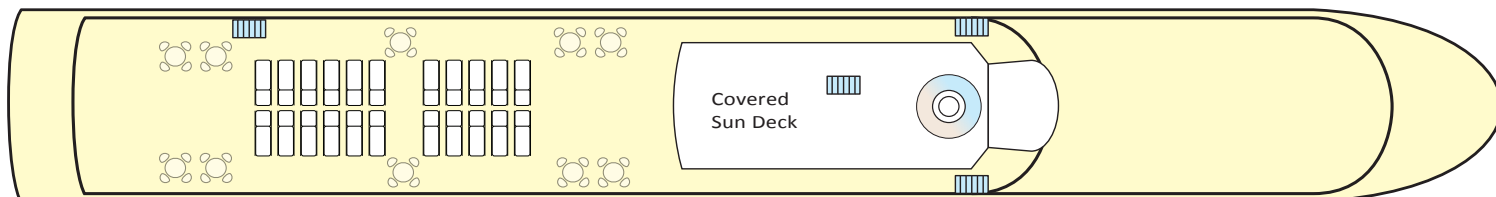


Restaurant

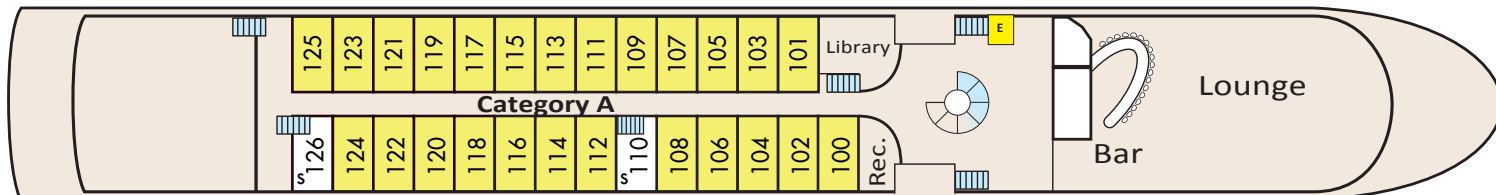




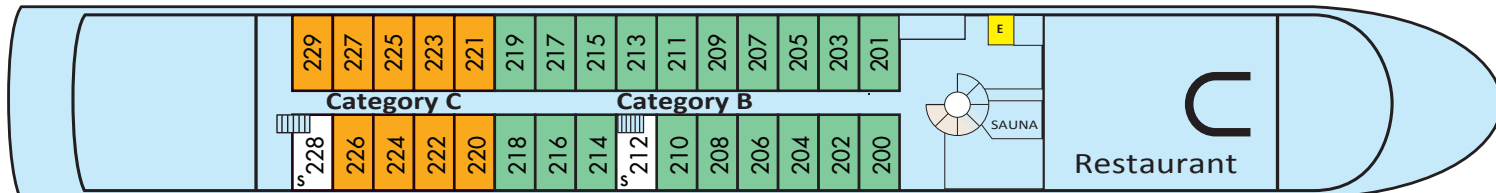
Sun DECK



Promenade DECK



Main DECK



CABIN UPGRADES

Upper Deck 3 - Category A

French Balcony \$499

Main Deck 2 - Category B

Twin w/Panorama Window . . \$199

Main Deck 2 - Category C

Twin w/Picture Window \$0

Single Cabin/Staff

